




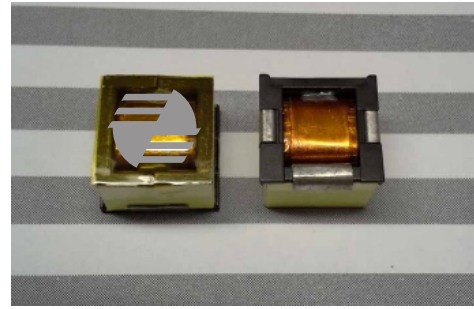


-  Magnetically Shielded
-  Low core loss
-  Ideal for high current requirements of notebook, video recorders and other DC-DC conversion applications
-  Custom inductance value or tolerance is available
-  RoHS compliant



ELECTRICAL SPECIFICATION @ 25°C

Part Number	Inductance ² (uH)	Inductance Tolerances (%)		DCR (m) Max	Saturation Current ³ (A)	Temperature Rise ⁴ (A)	Marking (YYYY)
		M	N				
SISPI1515LN-0R7F	0.75	N/A	±30	1.1	24	35	LN0R7
SISPI1515LM-1R7F	1.70	±20	N/A	1.6	16.8	30	LM1R7
SISPI1515LM-3R0F	3.00	±20	N/A	2.3	12.4	28	LM3R0
SISPI1515HN-0R4F	0.45	N/A	±30	1.1	32	35	HN0R4
SISPI1515HM-1R0F	1.00	±20	N/A	1.6	26	30	HM1R0
SISPI1515HM-1R8F	1.80	±20	N/A	2.3	20	28	HM1R8

Notes:

1. Ordering Information: SISPI1515L/Ha - bbbFc.

SISPI1515L/H = Product Type.

a = Tolerance of Inductance (M = ±20%; N = ±30%).

bbb = Inductance value in uH (i.e. 0R7 = 0.75uH; 1R7 = 1.7uH).

F = Internal Control Code.

c = Packaging Code (T = Tape & Reel Packaging in 13 inch Reel).

2. Inductance is tested at 1Vrms, 100kHz.

3. This indicates the value of DC current when the inductance decreases to 65% (tolerance is ±30%) or 75% (tolerance is ±20%) of its initial value.

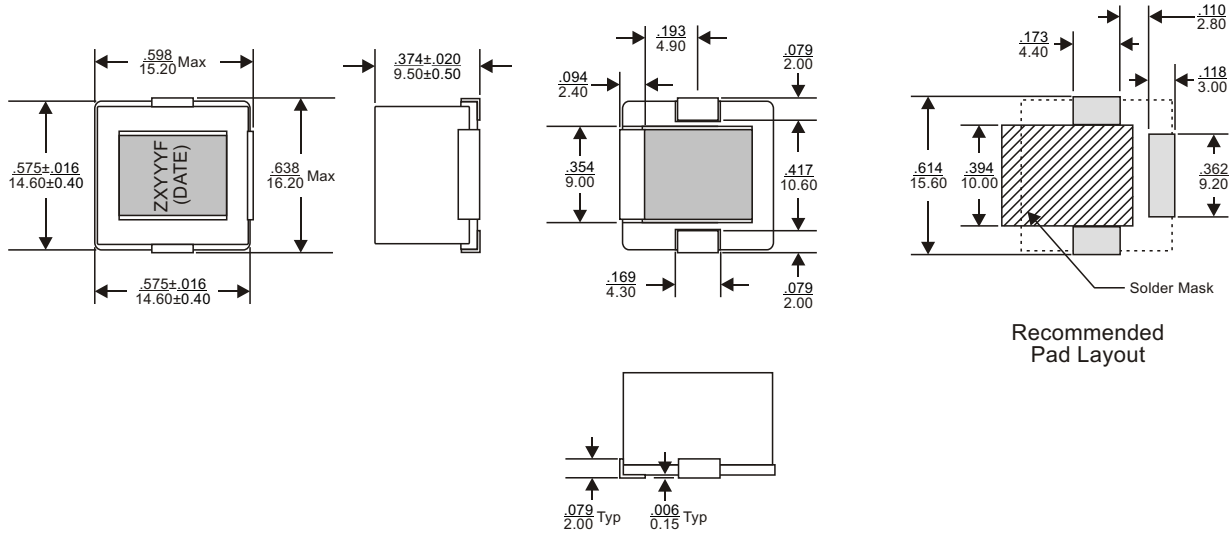
4. This indicates the value of DC current when the temperature rise is $\Delta t=40^{\circ}\text{C}$.

5. Operating temperature range: -40°C to $+125^{\circ}\text{C}$.

6. The part temperature (ambient temperature + temperature rise) should not exceed the upper limit of the operating temperature under worst case operating conditions. Circuit design, component placement, PWB trace size and thickness, airflow and other cooling provisions all affect the part temperature. Part temperature should be verified in the end application.



MECHANICAL DIMENSIONS



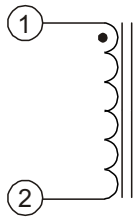
Recommended Pad Layout

Notes:

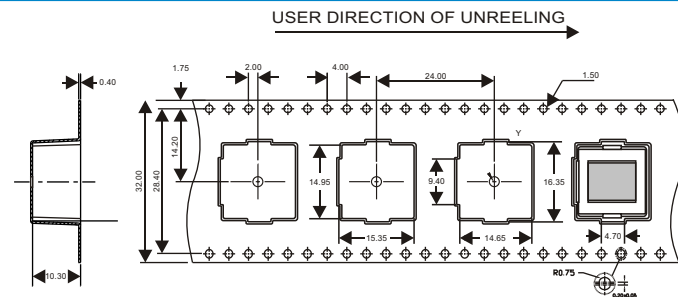
- All dimensions are specified in $\frac{\text{inches}}{\text{mm}}$ with higher precedence in mm.
- Unless otherwise specified, all tolerances are $\pm \frac{.010}{.25}$.

Weight (in gram)	: 7.5 typ.
Tape & Reel	: 200 / reel

SCHMATIC



PACKAGING



FOR MORE INFORMATION, PLEASE CONTACT

HEADQUARTER
1/F., Harbour View 1, No.12 Science Park East Avenue,
Phase II, Hong Kong Science Park, Shatin, N.T.
Hong Kong
Tel: (852) 2954 3333 Fax: (852) 2954 3304
Email: eempl@eleceltek.com
Website: <http://www.eleceltek.com> / www.eemagnetic.com

Information herein is for reference only and subject to change without notice. It does not constitute any representation, warranty or commitment of the company in respect of the products in any aspect. All logos, brands and product names mentioned herein are trademarks or registered trademarks of their respective owners. The company does not assume any liability arising out of the application or use of any product or circuit described herein. Copyrights 2009, E & E Magnetic Products Limited.

1/F., Harbour View 1, No.12 Science Park East Avenue, Phase II, Hong Kong Science Park, Shatin, N.T. Hong Kong
Tel: (852) 2954 3333 • Fax: (852) 2954 3304