




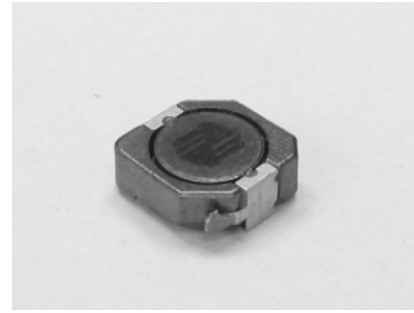


-  Magnetically Shielded
-  Miniature in size and high energy storage
-  Ideal for high current requirements of notebook, video recorders and other DC-DC conversion applications
-  Custom inductance value or tolerance is available
-  RoHS compliant



ELECTRICAL SPECIFICATION @ 25°C

Part Number	Inductance (uH)	Inductance Tolerance	Test Frequency ² (Hz)	DCR (m Max)	Rated DC Current ³ (A)	Marking (YYYY)
SIS105RN-0R8R	0.8	±30%	100k	4.3	7.50	N0R8
SIS105RN-1R5R	1.5	±30%	100k	5.8	7.00	N1R5
SIS105RN-2R2R	2.2	±30%	100k	7.2	6.30	N2R2
SIS105RN-3R3R	3.3	±30%	100k	10.4	5.75	N3R3
SIS105RN-4R7R	4.7	±30%	100k	12.3	4.75	N4R7
SIS105RN-6R8R	6.8	±30%	100k	18.0	4.10	N6R8
SIS105RN-8R2R	8.2	±30%	100k	20.0	4.00	N8R2
SIS105RN-100R	10	±30%	100k	26.0	3.75	N100
SIS105RN-150R	15	±30%	100k	41.0	2.65	N150
SIS105RN-220R	22	±30%	100k	61.0	1.80	N220
SIS105RN-330R	33	±30%	100k	84.0	1.65	N330
SIS105RN-470R	47	±30%	100k	130.0	1.50	N470
SIS105RN-560R	56	±30%	100k	149.0	1.45	N560
SIS105RN-680R	68	±30%	100k	201.0	1.20	N680
SIS105RN-820R	82	±30%	100k	227.0	0.95	N820
SIS105RN-101R	100	±30%	100k	253.0	0.90	N101
SIS105RN-151R	150	±30%	100k	370.0	0.80	N151
SIS105RN-221R	220	±30%	100k	500.0	0.70	N221
SIS105RN-331R	330	±30%	100k	812.0	0.50	N331

Notes:

1. Ordering Information: SIS105Ra - bbbRc.

SIS105R = Product Type.

a = Tolerance of Inductance (N= ±30%).

bbb = Inductance value in uH (i.e. 1R5 = 1.5uH; 150 = 15uH; 151 = 150uH).

R = Internal Control Code.

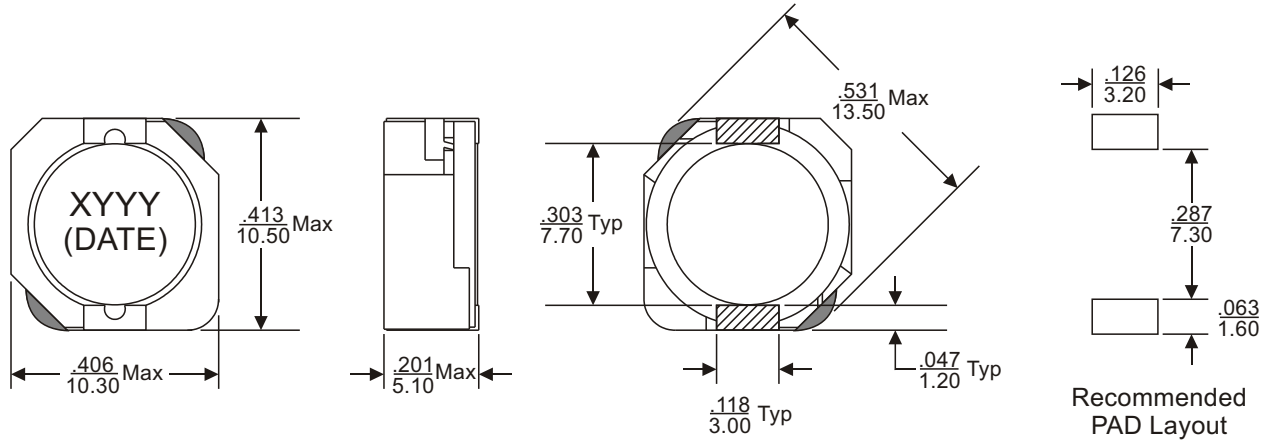
c = Packaging Code (T = Tape & Reel Packaging in 13 inch Reel).

2. Test frequency is specified as the frequency for measuring the inductance.

3. Rated D.C. current indicates the value of the current when the inductance is 35% lower than its initial value or D.C. current when the temperature rising T=30°C at D.C. Superposition.

4. Operating temperature range: -40°C to +125°C.

MECHANICAL DIMENSIONS

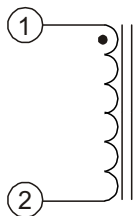


Notes:

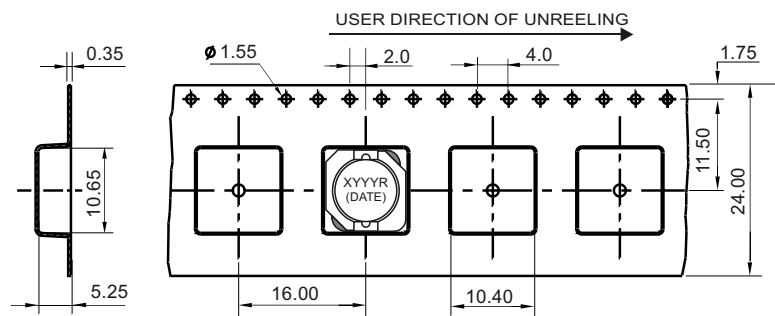
- The part temperature (ambient temperature + temperature rise) should not exceed the upper limit of the operating temperature under worst case operating conditions. Circuit design, component placement, PWB trace size and thickness, airflow and other cooling provisions all affect the part temperature. Part temperature should be verified in the end application.
- All dimensions are specified in $\frac{\text{inches}}{\text{mm}}$ with higher precedence in mm.
- Unless otherwise specified, all tolerances are $\pm \frac{.010}{0.25}$.

Weight (in gram)	: 3.0 typ.
Tape & Reel	: 700 / reel

SCHEMATIC



PACKAGING



FOR MORE INFORMATION, PLEASE CONTACT

HEADQUARTER

1/F., Harbour View 1, No.12 Science Park East Avenue,
Phase II, Hong Kong Science Park, Shatin, N.T.
Hong Kong

Tel: (852) 2954 3333 Fax: (852) 2954 3304

Email: eempl@eleceltek.com

Website: <http://www.eleceltek.com> / www.eemagnetic.com

Information herein is for reference only and subject to change without notice. It does not constitute any representation, warranty or commitment of the company in respect of the products in any aspect. All logos, brands and product names mentioned herein are trademarks or registered trademarks of their respective owners. The company does not assume any liability arising out of the application or use of any product or circuit described herein. Copyrights 2009, E & E Magnetic Products Limited.