




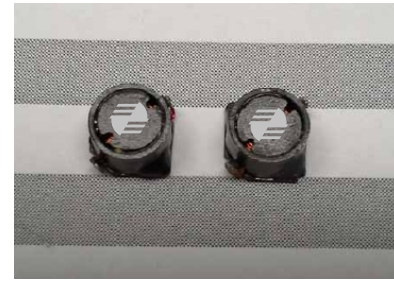


-  Magnetically Shielded
-  Low profile and Low DC resistance
-  Ideal for high current requirements of notebook, video recorders and other DC-DC conversion applications
-  Custom inductance value or tolerance is available
-  RoHS compliant



ELECTRICAL SPECIFICATION @ 25°C

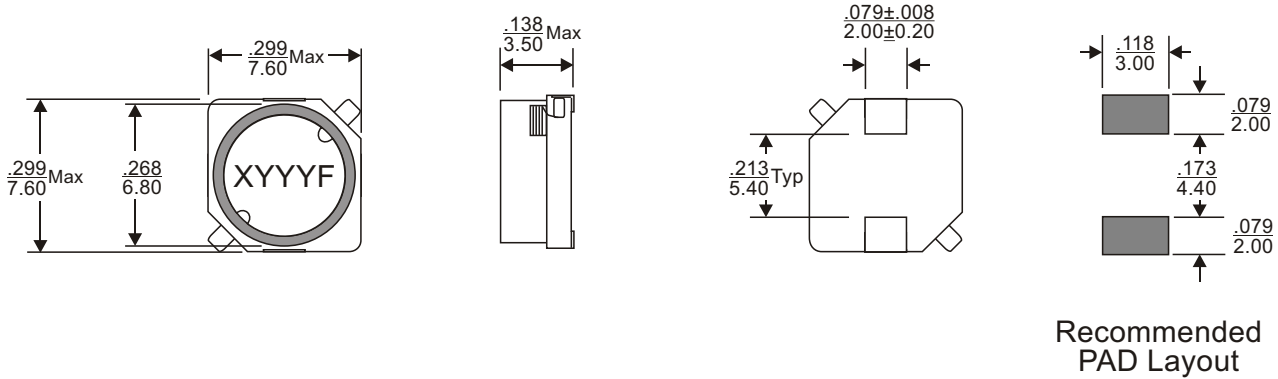
Part Number	Inductance L (uH)	Inductance Tolerance(%)	DCR (m Ω) Max	Test ³ Frequency (kHz)	Rated ⁴ DC Current (A) Max	Marking (XYYY)
		M				
SIS636M-1R0F	1.0	± 20	19	100	3.12	M1R0
SIS636M-1R5F	1.5	± 20	23	100	2.85	M1R5
SIS636M-2R2F	2.2	± 20	28	100	2.66	M2R2
SIS636M-3R3F	3.3	± 20	35	100	2.26	M3R3
SIS636M-4R7F	4.7	± 20	43	100	1.96	M4R7
SIS636M-6R8F	6.8	± 20	55	100	1.76	M6R8
SIS636M-100F	10.0	± 20	80	100	1.34	M100
SIS636M-120F	12.0	± 20	90	100	1.23	M120
SIS636M-150F	15.0	± 20	120	100	1.09	M150
SIS636M-180F	18.0	± 20	130	100	0.99	M180
SIS636M-220F	22.0	± 20	150	100	0.90	M220
SIS636M-270F	27.0	± 20	210	100	0.81	M270
SIS636M-330F	33.0	± 20	250	100	0.72	M330
SIS636M-390F	39.0	± 20	310	100	0.67	M390
SIS636M-470F	47.0	± 20	350	100	0.60	M470
SIS636M-560F	56.0	± 20	430	100	0.55	M560
SIS636M-680F	68.0	± 20	520	100	0.50	M680
SIS636M-820F	82.0	± 20	600	100	0.46	M820
SIS636M-101F	100.0	± 20	790	100	0.41	M101

Notes:

1. Ordering Information: SIS636a - bbbFc.
 SIS636 = Product Type.
 a = Tolerance of Inductance (M= ±20%).
 bbb = Inductance value in uH (i.e. 1R5 = 1.5uH; 150 = 15uH; 101 = 100uH).
 F = Internal Control Code.
 c = Packaging Code (T = Tape & Reel Packaging in 13 inch Reel).
2. Test frequency is specified as the frequency for measuring the inductance.
3. The Rated DC current indicates the value of DC current when the inductance value decreases to 10% of its initial value, or the value of current when the temperature rises to 40°C, whichever is lower.
4. Operating temperature range: -40°C to +125°C.
5. The part temperature (ambient temperature + temperature rise) should not exceed the upper limit of the operating temperature under worst case operating conditions. Circuit design, component placement, PWB trace size and thickness, airflow and other cooling provisions all affect the part temperature. Part temperature should be verified in the end application.



MECHANICAL DIMENSIONS

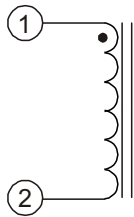


Notes:

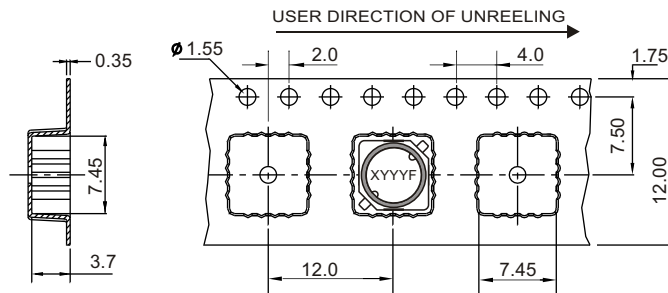
- 6. All dimensions are specified in $\frac{\text{inches}}{\text{mm}}$ with higher precedence in mm.
- 7. Unless otherwise specified, all tolerances are $\pm \frac{.010}{0.25}$.

Weight (in gram)	: 2.0 typ.
Tape & Reel	: 1400 / reel

SCHEMATIC



PACKAGING



FOR MORE INFORMATION, PLEASE CONTACT

HEADQUARTER
1/F., Harbour View 1, No.12 Science Park East Avenue,
Phase II, Hong Kong Science Park, Shatin, N.T.
Hong Kong
Tel: (852) 2954 3333 Fax: (852) 2954 3304
Email: eempl@eleceltek.com
Website: <http://www.eleceltek.com> / www.eemagnetic.com

Information herein is for reference only and subject to change without notice. It does not constitute any representation, warranty or commitment of the company in respect of the products in any aspect. All logos, brands and product names mentioned herein are trademarks or registered trademarks of their respective owners. The company does not assume any liability arising out of the application or use of any product or circuit described herein. Copyrights 2009, E & E Magnetic Products Limited.