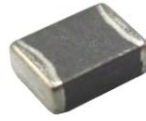


## Chip Bead ABFJ Series

Automotive  
AEC-Q200

RoHS Compliant  
Halogen Free  
REACH Compliant



Noise  
Suppression

Shield

Multilayer

Ferrite

High speed  
Signal line

### Part Numbering

| A     | BFJ         | 00           | 100505                  | 601                             | Y            | 00            |
|-------|-------------|--------------|-------------------------|---------------------------------|--------------|---------------|
| Grade | Series Name | Control Code | Dimensions Code<br>(mm) | Impedance<br>( $\Omega$ )       | Tolerance    | Internal Code |
|       |             |              | 100505 1.0x0.5x0.5      | 601 600<br>102 1000<br>182 1800 | Y $\pm 25\%$ |               |

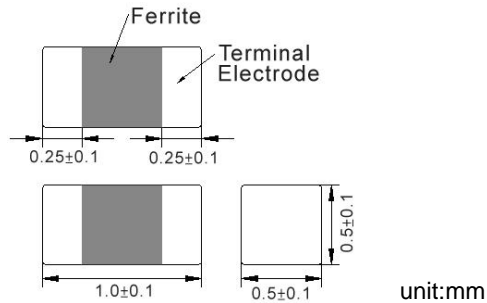
This specification applies to Multilayer Chip ferrite Bead for Automotive Electronics based on AEC-Q200 except for Power train and Safety.

Chip Bead ABFJ Series

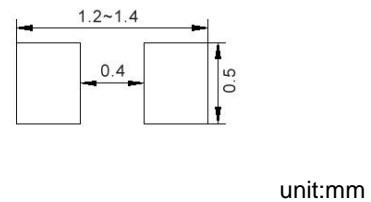
Automotive  
AEC-Q200

ABFJ00100505 Type

■ Dimensions



■ Recommended Land Pattern



■ Electrical Characteristics

| Part No.           | Impedance<br>(Ω)±25% | Impedance<br>(Ω)±40% | Test Freq.<br>(MHz) | RDC<br>(Ω)Max. | Rated Current<br>(mA)Max. |
|--------------------|----------------------|----------------------|---------------------|----------------|---------------------------|
| ABFJ00100505601Y00 | 600                  | 1400                 | 100/1000            | 0.85           | 300                       |
| ABFJ00100505102Y00 | 1000                 | 2000                 | 100/1000            | 1.25           | 250                       |
| ABFJ00100505182Y00 | 1800                 | 2700                 | 100/1000            | 2.20           | 200                       |

Note: When ordering, please specify tolerance code. Tolerance: Y=±25%

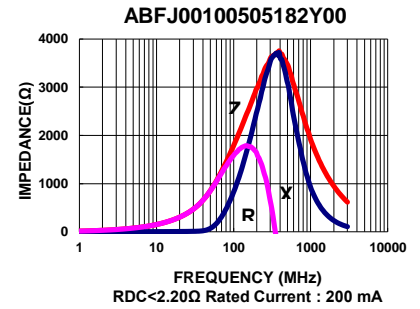
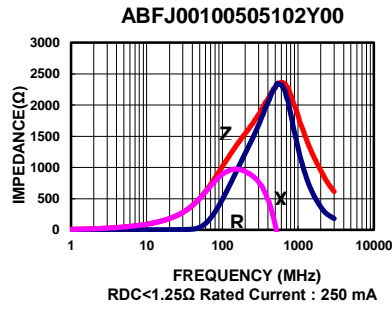
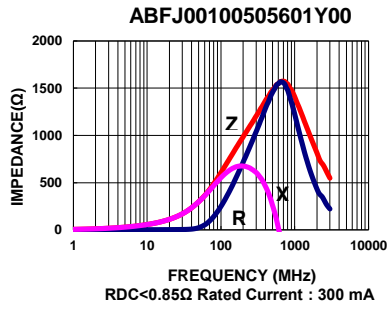
1. Operating temperature range - 40°C ~ 125°C
2. Rate Current : Applied the current to coils, the temperature rise shall not be more than 30°C
3. Measure Equipment:  
Z: HP4291A  
RDC: HP4338B or CHEN HWA 502

Chip Bead ABFJ Series

Automotive  
AEC-Q200

ABFJ00100505 Type

■ Characteristics Graph

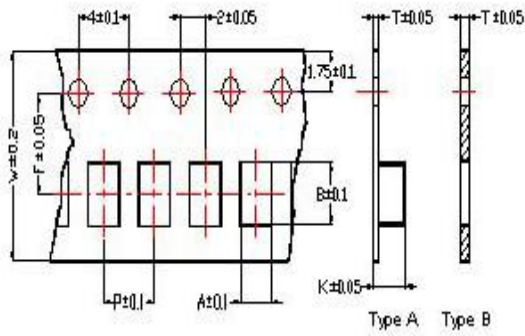


**Chip Bead ABFJ Series**

**Automotive  
AEC-Q200**

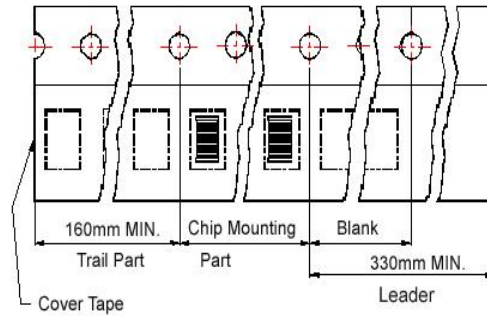
**■ Packaging**

**Tape Dimensions**

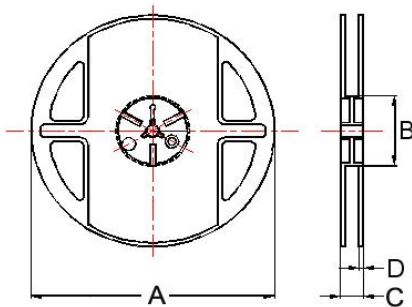


**Tape Material**

Carrier Tape: Polycarbonate (Tape A)  
Carrier Tape: Paper (Tape B)  
Cover Tape: Polystyrene



**Reel Dimensions**



**Dimensions in mm**

| TYPE         | Tape Dimensions |      |      |   |   |     |   |      | Reel Dimensions |    |    |   | Quantity<br>PCS / Reel |
|--------------|-----------------|------|------|---|---|-----|---|------|-----------------|----|----|---|------------------------|
|              | A               | B    | T    | W | P | F   | K | Tape | A               | B  | C  | D |                        |
| ABFJ00100505 | 0.62            | 1.12 | 0.60 | 8 | 2 | 3.5 | - | B    | 178             | 60 | 12 | 2 | 10000                  |