




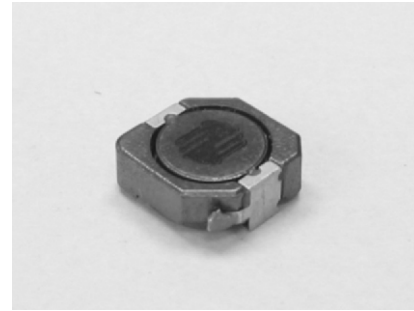


-  Magnetically Shielded
-  Miniature in size and high energy storage
-  Ideal for high current requirements of notebook, video recorders and other DC-DC conversion applications
-  Custom inductance value or tolerance is available
-  RoHS compliant



ELECTRICAL SPECIFICATION @ 25°C

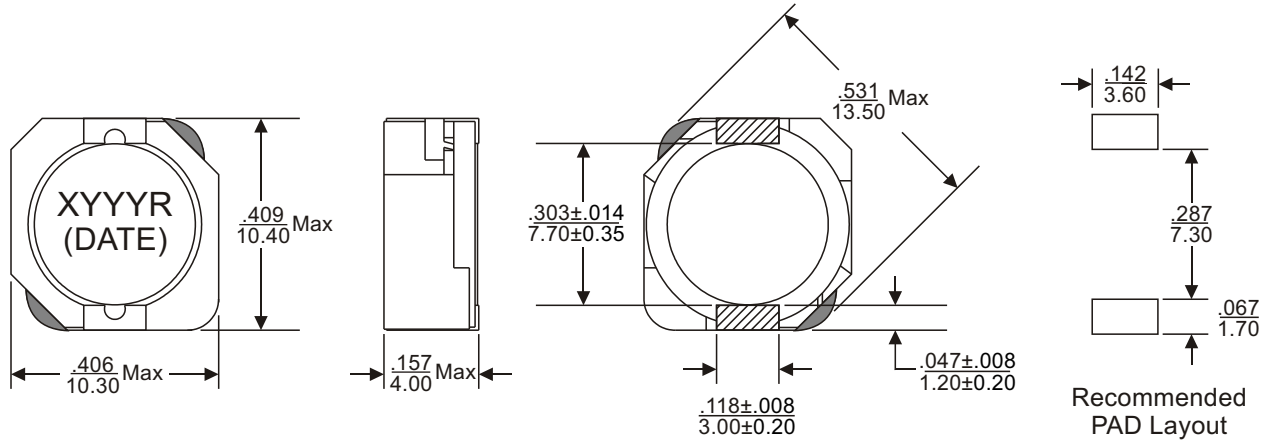
Part Number	Inductance (uH)	Inductance Tolerance	Test Frequency ² (Hz)	DCR (m Max)	Rated DC Current ³ (A)	Marking (YYYY)
SIS104RN-1R0R	1.0	±30%	100k	6.0	12	N1R0
SIS104RN-1R5R	1.5	±30%	100k	8.1	10	N1R5
SIS104RN-2R5R	2.5	±30%	100k	10	7.5	N2R5
SIS104RN-3R3R	3.3	±30%	100k	12.7	6.7	N3R3
SIS104RN-3R8R	3.8	±30%	100k	13	6.0	N3R8
SIS104RN-4R7R	4.7	±30%	100k	20.5	5.7	N4R7
SIS104RN-5R2R	5.2	±30%	100k	22	5.5	N5R2
SIS104RN-7R0R	7.0	±30%	100k	27	4.8	N7R0
SIS104RN-100R	10	±30%	100k	35	4.4	N100
SIS104RN-150R	15	±30%	100k	50	3.6	N150
SIS104RN-220R	22	±30%	100k	73	2.9	N220
SIS104RN-330R	33	±30%	100k	93	2.3	N330
SIS104RN-470R	47	±30%	100k	128	2.1	N470
SIS104RN-680R	68	±30%	100k	213	1.5	N680
SIS104RN-101R	100	±30%	100k	304	1.35	N101
SIS104RN-151R	150	±30%	100k	506	1.15	N151
SIS104RN-221R	220	±30%	100k	756	0.92	N221
SIS104RN-331R	330	±30%	100k	1090	0.70	N331
SIS104RN-471R	470	±30%	100k	1243	0.60	N471

Notes:

1. Ordering Information: SIS104Ra - bbbRc.
 SIS104R = Product Type.
 a = Tolerance of Inductance (N= ±30%).
 bbb = Inductance value in uH (i.e. 1R5 = 1.5uH; 150 = 15uH; 151 = 150uH).
 R = Internal Control Code.
 c = Packaging Code (T = Tape & Reel Packaging in 13 inch Reel).
2. Test frequency is specified as the frequency for measuring the inductance.
3. Rated D.C. current indicates the value of the current when the inductance is 35% lower than its initial value or the current when the temperature rising T=30°C at D.C. Superposition.
4. Operating temperature range: -40°C to +125°C.
5. The part temperature (ambient temperature + temperature rise) should not exceed the upper limit of the operating temperature under worst case operating conditions. Circuit design, component placement, PWB trace size and thickness, airflow and other cooling provisions all affect the part temperature. Part temperature should be verified in the end application.



MECHANICAL DIMENSIONS

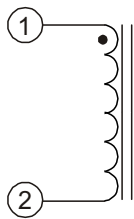


Notes:

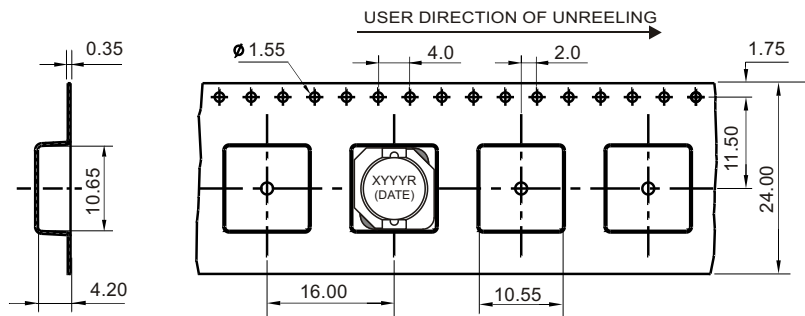
- 6. All dimensions are specified in $\frac{\text{inches}}{\text{mm}}$ with higher precedence in mm.
- 7. Unless otherwise specified, all tolerances are $\pm \frac{.010}{0.25}$.

Weight (in gram)	: 2.5 typ.
Tape & Reel	: 900 / reel

SCHEMATIC



PACKAGING



FOR MORE INFORMATION, PLEASE CONTACT

HEADQUARTER

1/F., Harbour View 1, No.12 Science Park East Avenue,
Phase II, Hong Kong Science Park, Shatin, N.T.
Hong Kong

Tel: (852) 2954 3333 Fax: (852) 2954 3304

Email: eempl@eleceltek.com

Website: <http://www.eleceltek.com> / www.eemagnetic.com

Information herein is for reference only and subject to change without notice. It does not constitute any representation, warranty or commitment of the company in respect of the products in any aspect. All logos, brands and product names mentioned herein are trademarks or registered trademarks of their respective owners. The company does not assume any liability arising out of the application or use of any product or circuit described herein. Copyrights 2009, E & E Magnetic Products Limited.