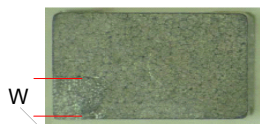
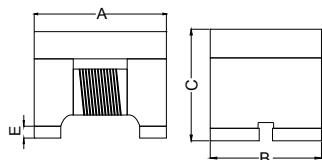


1.Features

- 1. High common mode impedance at high frequency effects excellent noise suppression performance.
- 2. HDMI1210F2SF series realizes small size and low profile. 1.2x1.0x0.9 mm.
- 3. 100% Lead(Pb) & Halogen-Free and RoHS compliant.

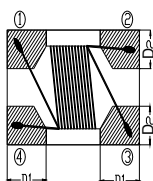


2.Dimension



當破損面積 < 5%, 產品列入允收品範圍

產品破損寬度



Series	A(mm)	B(mm)	C(mm)	D1(mm)	D2(mm)	E(mm)
1210F2SF	1.2±0.2	1.0±0.2	0.9 max.	0.35±0.1	0.35±0.1	0.03 min.

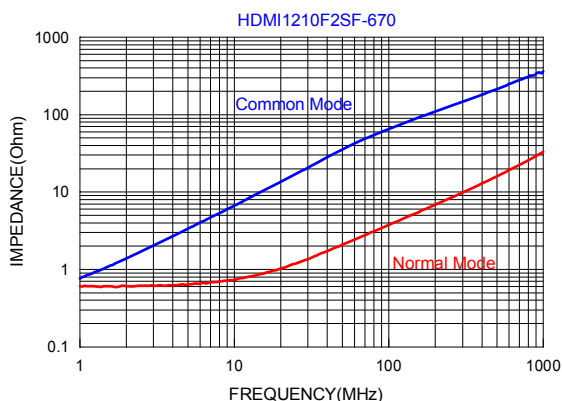
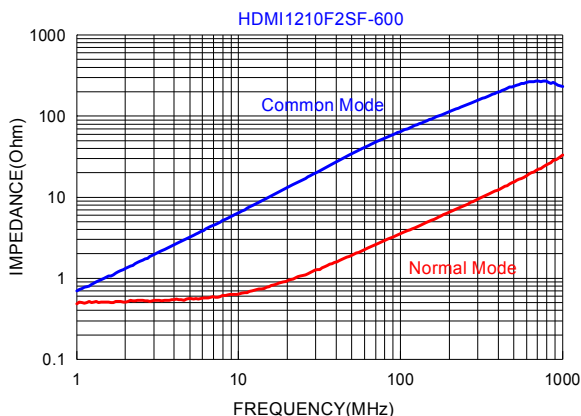
3.Part Numbering

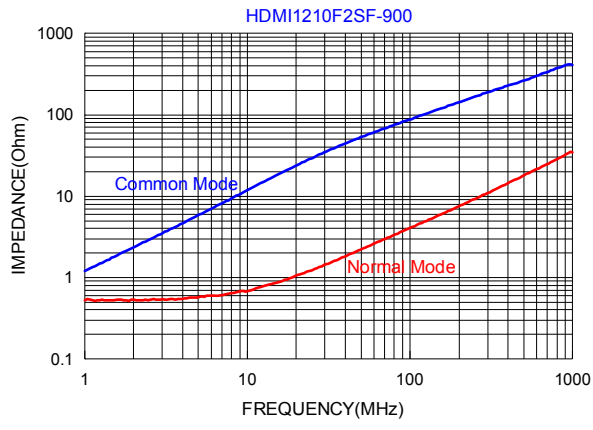


- A: Series
- B: Dimension
- C: Material Ferrite Core
- D: Number of Lines 2=2 lines
- E: Type S=Shielded , N=Unshielded
- F: Lead free
- G: Impedance 600=60Ω
- H: Packaging T=Taping and Reel
- I: Rated Current 04=400mA

4.Specification

TAI-TECH Part Number	Common mode Impedance (Ω)	Test Frequency (MHz)	DC Resistance (Ω) max.	Rated Current (mA)	Rated Volt. (Vdc)	Withstand Volt. (Vdc)	IR (Ω) min.
HDMI1210F2SF-600T04	60±25%	100	0.30	400	50	125	10M
HDMI1210F2SF-670T04	67±25%	100	0.30	400	50	125	10M
HDMI1210F2SF-900T02	90±25%	100	0.30	250	50	125	10M





# Wire Wound Type Common Mode Filter

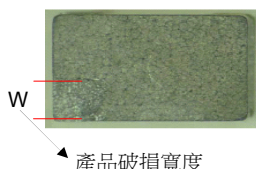
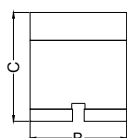
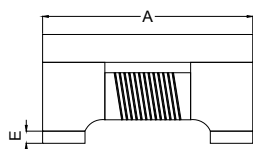
HDMI2012F2SF-SERIES

## 1.Features

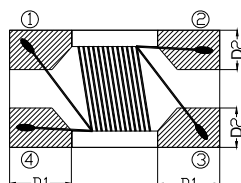
1. High common mode impedance at high frequency effects excellent noise suppression performance.
2. HDMI2012F2SF series realizes small size and low profile. 2.0x1.2x1.2 mm.
3. 100% Lead(Pb) & Halogen-Free and RoHS compliant.



## 2.Dimension



當破損面積 < 5%, 產品列入允收品範圍



Series	A(mm)	B(mm)	C(mm)	D1(mm)	D2(mm)	E(mm)
2012F2SF	2.0±0.2	1.2±0.2	1.2±0.2	0.50±0.1	0.51±0.1	0.15±0.1

## 3.Part Numbering



- A: Series
- B: Dimension
- C: Material                      Ferrite
- D: Number of Lines            2=2 lines
- E: Type                            S=One Circuit Type , N=Unshielded
- F: Lead free
- G: Impedance                    670=67Ω
- H: Packaging                      T=Taping and Reel, B=Bulk
- I: Rated Current                 04=400mA

## 4.Specification

TAI-TECH Part Number	Common mode Impedance (Ω)		Test Frequency (MHz)	DC Resistance (Ω) max.	Rated Current (mA)	Rated Volt. (Vdc)	Withstand Volt. (Vdc)	IR (Ω) min.
	67 typ.	50 min.						
HDMI2012F2SF-670T04	67 typ.	50 min.	100	0.30	400	50	125	10M
HDMI2012F2SF-900T04	90 typ.	65 min.	100	0.30	400	50	125	10M

