




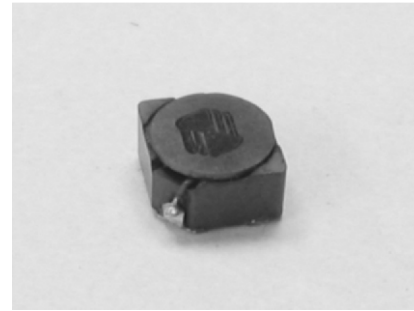


-  Magnetically Shielded
-  Miniature in size and high energy storage
-  Ideal for high current requirements of notebook, video recorders and other DC-DC conversion applications
-  Custom inductance value or tolerance is available
-  RoHS compliant



**ELECTRICAL SPECIFICATION @ 25°C**

Part Number	Inductance (uH)	Tolerance (%)	Test Frequency <sup>2</sup> (MHz)	DCR (m Max)	Rated DC Current <sup>3</sup> (A)	Marking (XYYY)
SIS4D18N-1R0R	1.0	±30	1	45	1.72	N1R0
SIS4D18N-2R2R	2.2	±30	1	75	1.32	N2R2
SIS4D18N-2R7R	2.7	±30	1	105	1.28	N2R7
SIS4D18N-3R3R	3.3	±30	1	110	1.04	N3R3
SIS4D18N-3R9R	3.9	±30	1	155	0.88	N3R9
SIS4D18N-4R7R	4.7	±30	1	162	0.84	N4R7
SIS4D18N-5R6R	5.6	±30	1	170	0.80	N5R6
SIS4D18N-6R8R	6.8	±30	1	200	0.76	N6R8
SIS4D18N-8R2R	8.2	±30	1	245	0.68	N8R2
SIS4D18N-100R	10	±30	0.1	200	0.61	N100
SIS4D18N-120R	12	±30	0.1	210	0.56	N120
SIS4D18N-150R	15	±30	0.1	240	0.50	N150
SIS4D18N-180R	18	±30	0.1	338	0.48	N180
SIS4D18N-220R	22	±30	0.1	397	0.41	N220
SIS4D18N-270R	27	±30	0.1	441	0.35	N270
SIS4D18N-330R	33	±30	0.1	694	0.32	N330
SIS4D18N-390R	39	±30	0.1	709	0.30	N390
SIS4D18N-470R	47	±30	0.1	922	0.28	N470
SIS4D18N-560R	56	±30	0.1	1080	0.26	N560
SIS4D18N-680R	68	±30	0.1	1300	0.24	N680
SIS4D18N-820R	82	±30	0.1	1560	0.22	N820
SIS4D18N-101R	100	±30	0.1	1730	0.20	N101
SIS4D18N-121R	120	±30	0.1	2390	0.18	N121
SIS4D18N-151R	150	±30	0.1	2670	0.15	N151
SIS4D18N-181R	180	±30	0.1	4000	0.14	N181

**Notes:**

1. Ordering Information: SIS4D18a - bbbRc.

SIS4D18 = Product Type.

a = Tolerance of Inductance (N = ±30%).

bbb = Inductance value in uH (i.e. 4R7 = 4.7uH; 470 = 47uH; 151 = 150uH).

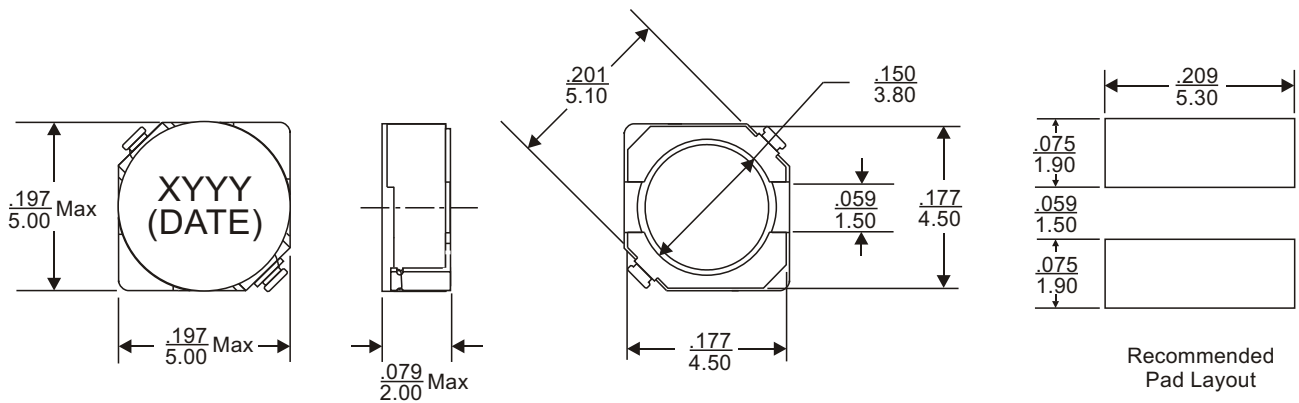
R = Internal Control Code.

c = Packaging Code (U = Tape & Reel Packaging in 7 inch Reel).

2. Test frequency is specified as the frequency for measuring the inductance.



**MECHANICAL DIMENSIONS**

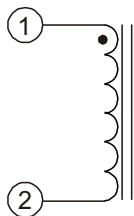


**Notes:**

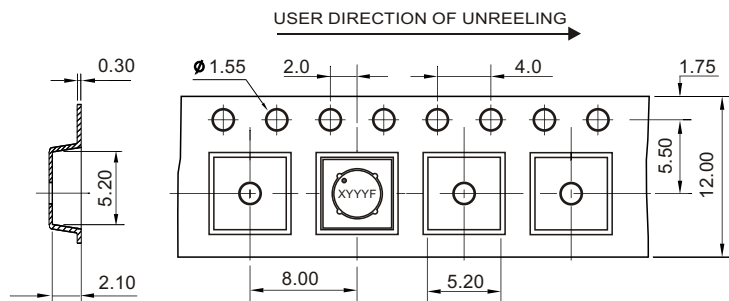
- Rated D.C. current indicates the value of the current when the inductance is 35% lower than its initial value or the current when temperature rising  $T=40^{\circ}\text{C}$  at D.C. Superposition.
- Operating temperature range:  $-40^{\circ}\text{C}$  to  $+125^{\circ}\text{C}$ .
- The part temperature (ambient temperature + temperature rise) should not exceed the upper limit of the operating temperature under worst case operating conditions. Circuit design, component placement, PWB trace size and thickness, airflow and other cooling provisions all affect the part temperature. Part temperature should be verified in the end application.
- All dimensions are specified in  $\frac{\text{inches}}{\text{mm}}$  with higher precedence in mm.
- Unless otherwise specified, all tolerances are  $\pm .010$  /  $0.25$ .

Weight (in gram)	: 1.0 typ.
Tape & Reel	: 1000 / reel

**SCHEMATIC**



**PACKAGING**



**FOR MORE INFORMATION, PLEASE CONTACT**

**HEADQUARTER**

1/F., Harbour View 1, No.12 Science Park East Avenue,  
Phase II, Hong Kong Science Park, Shatin, N.T.

Hong Kong

Tel: (852) 2954 3333 Fax: (852) 2954 3304

Email: eempl@eleceltek.com

Website: <http://www.eleceltek.com> / [www.eemagnetic.com](http://www.eemagnetic.com)

Information herein is for reference only and subject to change without notice. It does not constitute any representation, warranty or commitment of the company in respect of the products in any aspect. All logos, brands and product names mentioned herein are trademarks or registered trademarks of their respective owners. The company does not assume any liability arising out of the application or use of any product or circuit described herein. Copyrights 2009, E & E Magnetic Products Limited.