




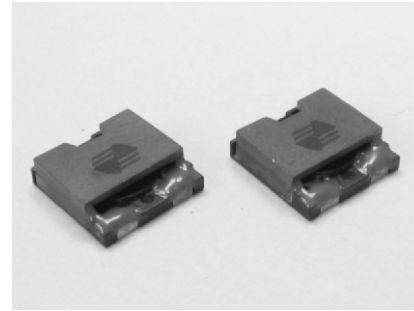


-  Magnetically Shielded
-  High energy storage
-  Ideal for high current requirements of notebook, video recorders and other DC-DC conversion applications
-  Custom inductance value or tolerance is available
-  RoHS compliant



ELECTRICAL SPECIFICATION @ 25°C

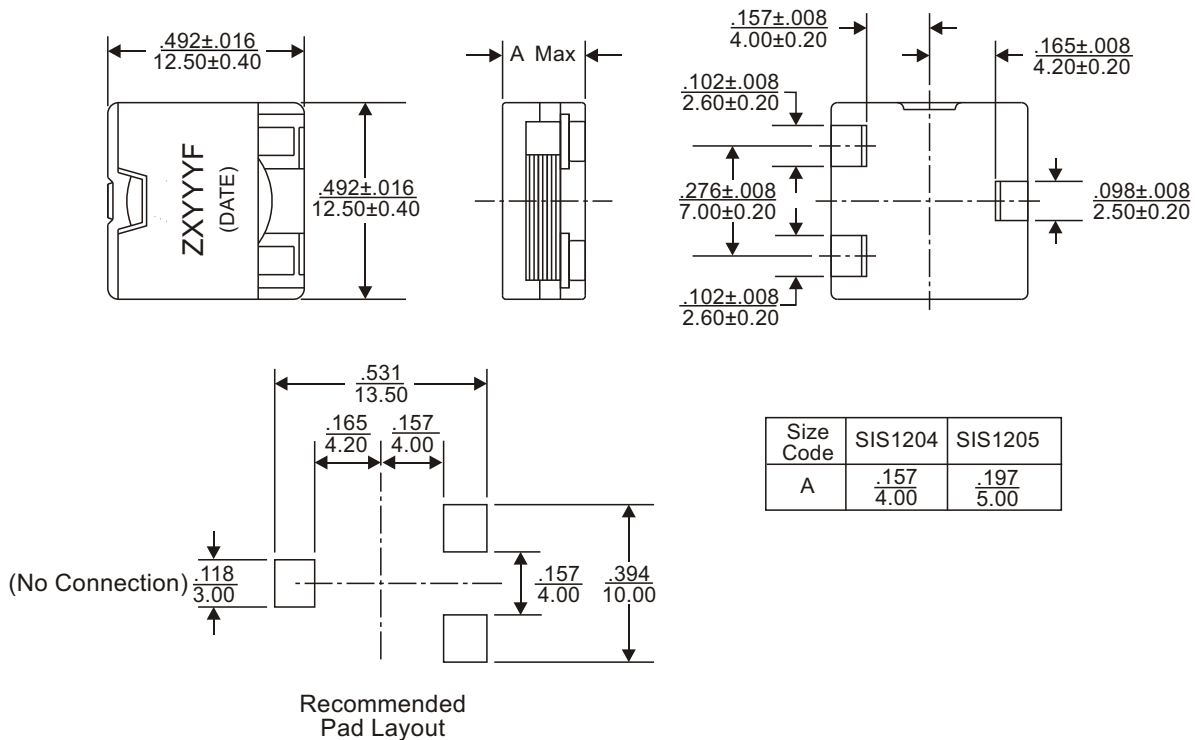
| Part Number | Inductance ² (uH ± 20%) | Inductance ⁵ @I _{rated} (uH) Typ | I _{rated} ⁶ Current (A) | DCR (m Max) | Saturation ³ Current (A) | Heating ⁴ Current (A) | Marking (ZXYYY) |
|---------------|---------------------------------------|--|---|----------------|---|--|--------------------|
| SIS1204M-0R3F | 0.3 | 0.26 | 17 | 1.7 | 22 | 17 | 4M0R3 |
| SIS1204M-0R6F | 0.6 | 0.50 | 14 | 3.0 | 18 | 14 | 4M0R6 |
| SIS1204M-1R0F | 1.0 | 0.89 | 11 | 4.5 | 15 | 11 | 4M1R0 |
| SIS1204M-2R2F | 2.2 | 1.89 | 9 | 6.8 | 9 | 9 | 4M2R2 |
| SIS1204M-3R3F | 3.3 | 2.89 | 8 | 11.2 | 8 | 8 | 4M3R3 |
| SIS1204M-4R7F | 4.7 | 4.19 | 6 | 15.4 | 6 | 6 | 4M4R7 |
| SIS1204M-5R5F | 5.5 | 4.90 | 5 | 15.4 | 5 | 5 | 4M5R5 |
| SIS1205M-0R3F | 0.33 | 0.27 | 25 | 0.8 | 33.2 | 25 | 5M0R3 |
| SIS1205M-0R6F | 0.60 | 0.53 | 23 | 1.75 | 28.3 | 23 | 5M0R6 |
| SIS1205M-1R0F | 1.0 | 0.89 | 18 | 3.6 | 22.8 | 18 | 5M1R0 |
| SIS1205M-2R2F | 2.2 | 1.86 | 14 | 7.5 | 15.5 | 14 | 5M2R2 |
| SIS1205M-3R3F | 3.3 | 2.63 | 12 | 10.4 | 12.2 | 12 | 5M3R3 |
| SIS1205M-4R7F | 4.7 | 3.95 | 9.3 | 12.4 | 10.2 | 9.3 | 5M4R7 |
| SIS1205M-5R5F | 5.5 | 4.38 | 8.2 | 12.4 | 8.2 | 9.3 | 5M5R5 |

Notes:

1. Ordering Information: SIS1204/5a - bbbFc.
 SIS1204/5 = Product Type.
 a = Tolerance of Inductance (M = ±20%).
 bbb = Inductance value in uH (i.e. 0R3 = 0.3uH; 3R3 = 3.3uH).
 F = Internal Control Code.
 c = Packaging Code (T = Tape & Reel Packaging in 13 inch Reel).
2. Inductance is tested at 0.25Vrms, 100kHz.
3. Saturation current, I_{sat}, indicates the value of DC current when the inductance is 10% typical (20% typical for SIS1205 series) lower than its initial value or the current when the temperature rising T=40°C, whichever is lower.
4. Heating current, I_{rms}, is the value of current when the temperature rising T=40°C typical.
5. Rated inductance is for reference only.
6. The rated current listed is the lower of the saturation current @25°C or the heating current.
7. Operating temperature range: -40°C to +130°C.
8. The part temperature (ambient temperature + temperature rise) should not exceed the upper limit of the operating temperature under worst case operating conditions. Circuit design, component placement, PWB trace size and thickness, airflow and other cooling provisions all affect the part temperature. Part temperature should be verified in the end application.



MECHANICAL DIMENSIONS

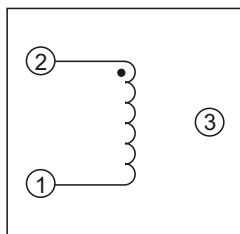


Notes:

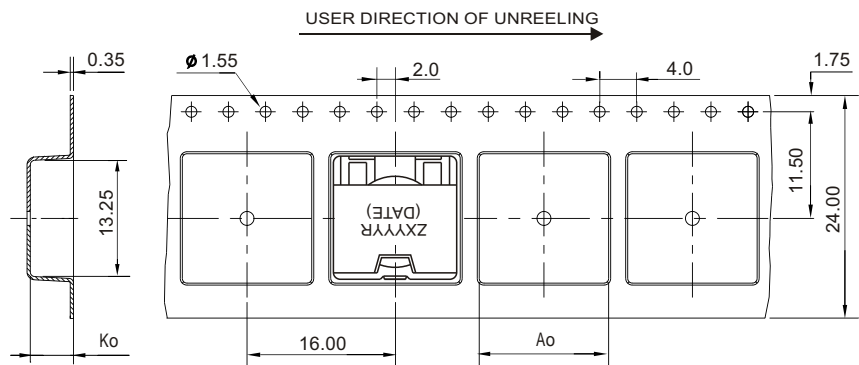
- 9. All dimensions are specified in $\frac{\text{inches}}{\text{mm}}$ with higher precedence in mm.
- 10. Unless otherwise specified, all tolerances are $\pm \frac{.010}{0.25}$.

| | SIS1204 | SIS1205 |
|--------------------|------------|------------|
| Weight (in gram.): | 2.0 typ. | 2.5 typ. |
| Tape & Reel: | 850 / reel | 700 / reel |
| Pocket Length (Ao) | 13.05 | 13.25 |
| Pocket Depth (Ko) | 4.30 | 5.30 |

SCHEMATIC



PACKAGING



FOR MORE INFORMATION, PLEASE CONTACT

HEADQUARTER

1/F., Harbour View 1, No.12 Science Park East Avenue,
Phase II, Hong Kong Science Park, Shatin, N.T.
Hong Kong

Tel: (852) 2954 3333 Fax: (852) 2954 3304

Email: eempl@eleceltek.com

Website: <http://www.eleceltek.com> / www.eemagnetic.com

Information herein is for reference only and subject to change without notice. It does not constitute any representation, warranty or commitment of the company in respect of the products in any aspect. All logos, brands and product names mentioned herein are trademarks or registered trademarks of their respective owners. The company does not assume any liability arising out of the application or use of any product or circuit described herein. Copyrights 2009, E & E Magnetic Products Limited.