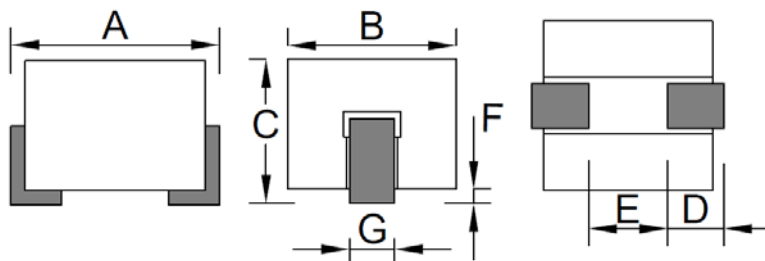


1. Features

- 100% Lead(Pb) & Halogen-Free and RoHS compliant.
- High reliability -Reliability tests comply with AEC-Q200.
- Operating temperature-40~+125°C (Including self - temperature rise)



2. Dimension



PRODUCT SIZE						
A(mm)	B(mm)	C(mm)	D(mm)	E(mm)	F(mm)	G(mm)
3.08 +0.10/-0.15	2.9 ±0.10	2.20 ±0.10	0.8 ±0.20	1.2 Min.	0.00~0.11	0.85 ±0.10

3. Part Numbering

BPH **323023** **W5** **V** - **400** **T**

A B C D E F

- A: Series
 B: Dimension
 C: Material Ferrite Core
 D: Category Code V=Vehicle
 E: Impedance 400=40Ω
 F: Packaging T=Taping and Reel

4. Specification

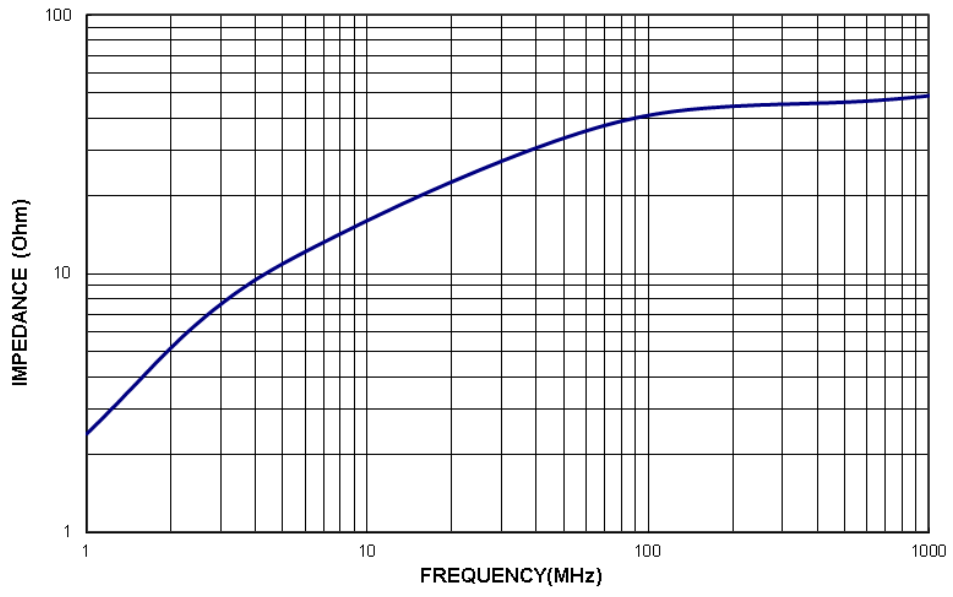
TAI-TECH Part Number	ELECTRICAL REQUIREMENTS 1			ELECTRICAL REQUIREMENTS 2			DCR (mΩ) Max.	Rated Current(A)	
	Impedance (Ω)	Tolerance (%)	Test Frequency (MHz)	Impedance (Ω)	Tolerance (%)	Test Frequency (MHz)		ΔT=40°C TYP.	ΔT=60°C TYP.
BPH323023W5V-400T	23	±25	25	40	±25	100	0.60	21.0(1) 15.0(2)	26.0(1) 18.0(2)

Note:

Rated Current :

- (1) : Chroma high current test fixture.
 (2) :PCB test fixture (30x45mm copper pattern , 50um copper thickness).

Typical Impedance v.s. Frequency Curve

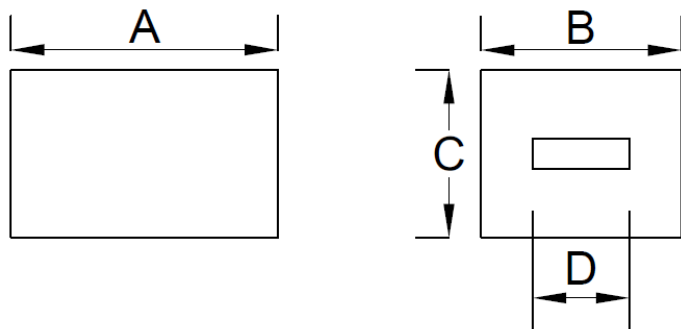


1. Features

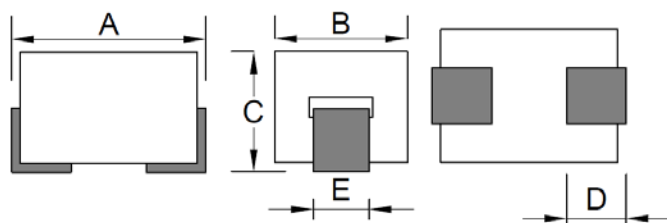
1. 100% Lead(Pb) & Halogen-Free and RoHS compliant.
2. Operating temperature-40~+125°C (Including self - temperature rise)
3. High reliability -Reliability tests comply with AEC-Q200



2. Dimension

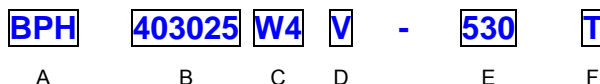


CORE SIZE			
A(mm)	B(mm)	C(mm)	D(mm)
4.00 ±0.25	3.10 ±0.15	2.50 ±0.15	1.50 ±0.15



PRODUCT SIZE				
A(mm)	B(mm)	C(mm)	D(mm)	E(mm)
4.30~5.10	3.1 ±0.15	2.70~3.1	1.35±0.20	1.35±0.15

3. Part Numbering



- A: Series
- B: Dimension
- C: Category Code
- D: Material
- E: Impedance
- F: Packaging
- V=Vehicle
- Ferrite Core
- 530=53Ω
- T=Taping and Reel

4. Specification

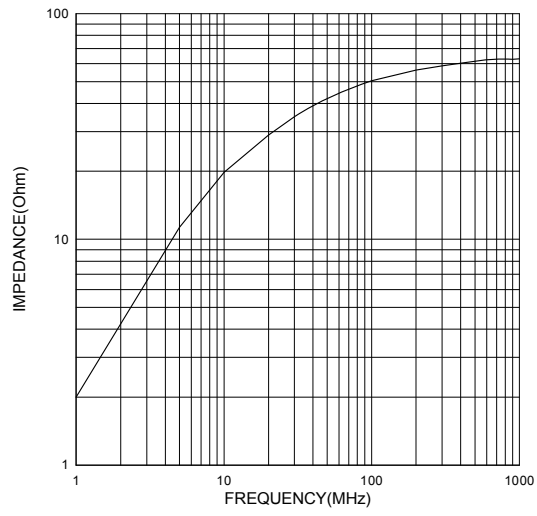
TAI-TECH Part Number	ELECTRICAL REQUIREMENTS 1			ELECTRICAL REQUIREMENTS 2			DCR (mΩ) Max.	Rated Current(A)	
	Impedance (Ω)	Tolerance (%)	Test Frequency (MHz)	Impedance (Ω)	Tolerance (%)	Test Frequency (MHz)		ΔT=40°C TYP.	ΔT=60°C TYP.
BPH403025W4V-530T	35	±25	25	53	±25	100	0.60	35.0(1) 15.0(2)	45.0(1) 18.0(2)

Note:

Rated Current :

- (1) : Chroma high current test fixture.
- (2) :PCB test fixture (30x45mm copper pattern , 50um copper thickness).

Typical Impedance v.s. Frequency Curve

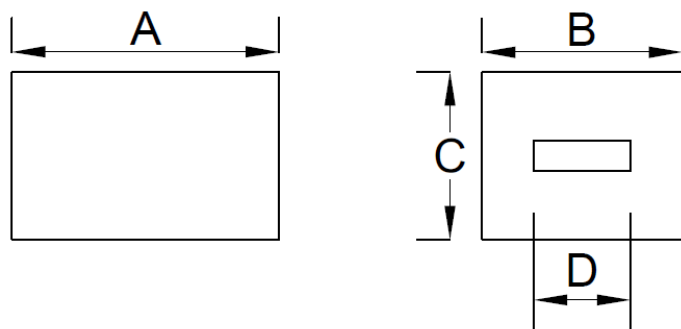


1. Features

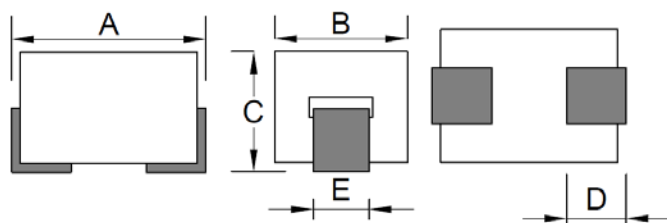
1. 100% Lead(Pb) & Halogen-Free and RoHS compliant.
2. High reliability -Reliability tests comply with AEC-Q200
3. Operating temperature-40~+125°C (Including self - temperature rise)



2. Dimension

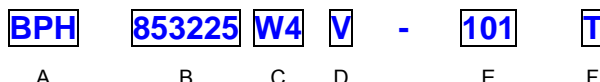


CORE SIZE			
A(mm)	B(mm)	C(mm)	D(mm)
8.50 ±0.25	3.10 ±0.15	2.50 ±0.15	1.50 ±0.15



PRODUCT SIZE				
A(mm)	B(mm)	C(mm)	D(mm)	E(mm)
9.0 ±0.40	3.1 ±0.15	2.8 ±0.25	1.50±0.50	1.25±0.20

3. Part Numbering



- A: Series
- B: Dimension
- C: Material Ferrite Core
- D: Category Code V=Vehicle
- 101=100Ω
- E: Packaging T=Taping and Reel

4. Specification

TAI-TECH Part Number	ELECTRICAL REQUIREMENTS 1			ELECTRICAL REQUIREMENTS 2			DCR (mΩ) Max.	Rated Current(A)	
	Impedance (Ω)	Tolerance (%)	Test Frequency (MHz)	Impedance (Ω)	Tolerance (%)	Test Frequency (MHz)		ΔT=40°C TYP.	ΔT=60°C TYP.
BPH853225W4V-101T	65	±25	25	100	±25	100	1.00	35.0(1) 18.0(2)	45.0(1) 22.0(2)

Note:

Rated Current :

(1) : Chroma high current test fixture.

(2) :PCB test fixture (30x45mm copper pattern , 50um copper thickness).

Typical Impedance v.s. Frequency Curve

