






-  Magnetically Shielded
-  Miniature in size and high energy storage
-  Ideal for high current requirements of notebook, video recorders and other DC-DC conversion applications
-  Custom inductance value or tolerance is available
-  RoHS compliant



ELECTRICAL SPECIFICATION @ 25°C

Part Number	Inductance (uH)	Inductance Tolerance	Test Frequency ² (Hz)	DCR (Max)	Rated DC Current ³ (A)	Marking (XYYY)
SISCDRH74M-R33R	0.33	±20%	100k	17m	8.50	MR33
SISCDRH74M-3R3R	3.3	±20%	100k	30m	4.50	M3R3
SISCDRH74M-100R	10	±20%	1k	49m	1.84	M100
SISCDRH74M-120R	12	±20%	1k	58m	1.71	M120
SISCDRH74M-150R	15	±20%	1k	81m	1.47	M150
SISCDRH74M-180R	18	±20%	1k	91m	1.31	M180
SISCDRH74M-220R	22	±20%	1k	0.11	1.23	M220
SISCDRH74M-270R	27	±20%	1k	0.15	1.12	M270
SISCDRH74M-330R	33	±20%	1k	0.17	0.96	M330
SISCDRH74M-390R	39	±20%	1k	0.23	0.91	M390
SISCDRH74M-470R	47	±20%	1k	0.26	0.88	M470
SISCDRH74M-560R	56	±20%	1k	0.35	0.75	M560
SISCDRH74M-680R	68	±20%	1k	0.38	0.69	M680
SISCDRH74M-820R	82	±20%	1k	0.43	0.61	M820
SISCDRH74M-101R	100	±20%	1k	0.61	0.60	M101
SISCDRH74M-121R	120	±20%	1k	0.66	0.52	M121
SISCDRH74M-151R	150	±20%	1k	0.88	0.46	M151
SISCDRH74M-181R	180	±20%	1k	0.98	0.42	M181
SISCDRH74M-221R	220	±20%	1k	1.17	0.36	M221
SISCDRH74M-271R	270	±20%	1k	1.64	0.34	M271
SISCDRH74M-331R	330	±20%	1k	1.86	0.32	M331
SISCDRH74M-391R	390	±20%	1k	2.85	0.29	M391
SISCDRH74M-471R	470	±20%	1k	3.01	0.26	M471
SISCDRH74M-561R	560	±20%	1k	3.62	0.23	M561
SISCDRH74M-681R	680	±20%	1k	4.63	0.22	M681
SISCDRH74M-821R	820	±20%	1k	5.20	0.20	M821
SISCDRH74M-102R	1000	±20%	1k	6.00	0.18	M102

Notes: 1. Ordering Information: SISCDRH74a - bbbRc.

SISCDRH74 = Product Type.

a = Tolerance of Inductance (M = ±20%).

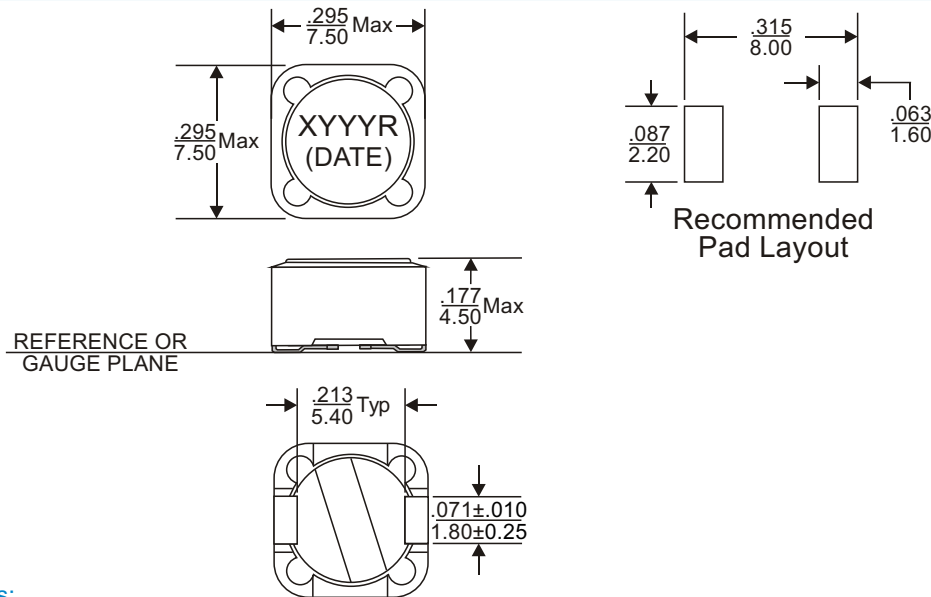
bbb = Inductance value in uH (i.e. 3R3 = 3.3uH; 330 = 33uH; 331 = 330uH; 102 = 1000uH).

R = Internal Control Code.

c = Packaging Code (T = Tape & Reel Packaging in 13 inch Reel).



MECHANICAL DIMENSIONS

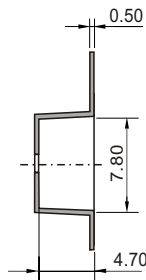
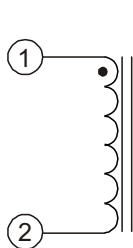


Notes:

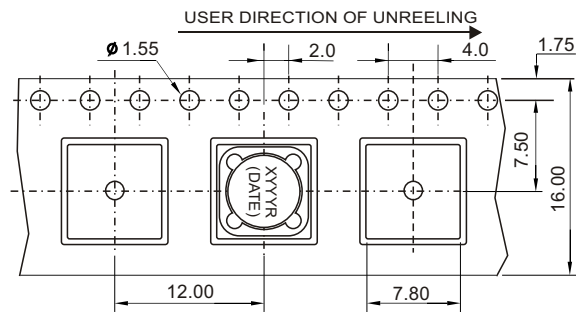
2. Test frequency is specified as the frequency for measuring the inductance.
3. Rated D.C. current indicates the value of the current when the inductance is 35% lower than its initial value and the temperature rising $T=40^{\circ}\text{C}$ at D.C. Superposition.
4. Operating temperature range: -40°C to $+125^{\circ}\text{C}$.
5. The part temperature (ambient temperature + temperature rise) should not exceed the upper limit of the operating temperature under worst case operating conditions. Circuit design, component placement, PWB trace size and thickness, airflow and other cooling provisions all affect the part temperature. Part temperature should be verified in the end application.
6. All dimensions are specified in $\frac{\text{inches}}{\text{mm}}$ with higher precedence in mm.
7. Unless otherwise specified, all tolerances are $\pm \frac{.010}{0.25}$.

Weight (in gram)	: 0.9 typ.
Tape & Reel	: 1000 / reel

SCHEMATIC



PACKAGING



FOR MORE INFORMATION, PLEASE CONTACT

HEADQUARTER

1/F., Harbour View 1, No.12 Science Park East Avenue,
Phase II, Hong Kong Science Park, Shatin, N.T.
Hong Kong

Tel: (852) 2954 3333 Fax: (852) 2954 3304

Email: eempl@eleceltek.com

Website: <http://www.eleceltek.com> / www.eemagnetic.com

Information herein is for reference only and subject to change without notice. It does not constitute any representation, warranty or commitment of the company in respect of the products in any aspect. All logos, brands and product names mentioned herein are trademarks or registered trademarks of their respective owners. The company does not assume any liability arising out of the application or use of any product or circuit described herein. Copyrights 2009, E & E Magnetic Products Limited.