




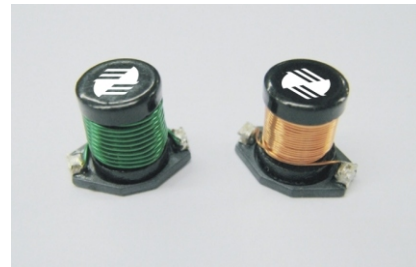


-  Clip pin termination.
-  Footprint: 13.0mm x 9.4 mm Max.
-  Current Rating: up to 4.9A.
-  Inductance Range: 10 H to 1000 H.
-  RoHS compliant.



ELECTRICAL SPECIFICATION @ 25°C

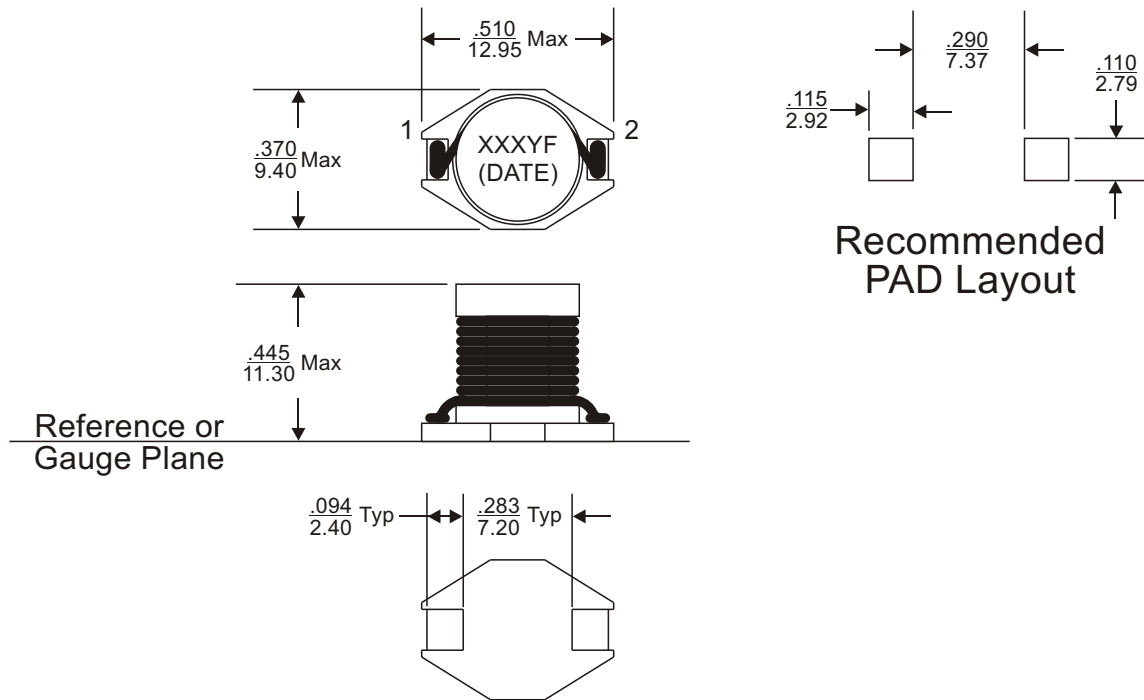
| E & E Part Number UIS1311-XXXMF | Inductance ² (H) | Inductance Tolerance | I _{rated} ³ (A) | DCR (m Ω) Max. | I _{sat} ⁴ (A) | I _{rms} ⁵ (A) | SRF ⁶ (MHz) Typ. | Marking (XXXMF) |
|---------------------------------------|----------------------------------|-------------------------|----------------------------------------|----------------------|--------------------------------------|--------------------------------------|-----------------------------------|--------------------|
| | | M | | | | | | |
| UIS1311-103MF | 10 | ±20% | 4.90 | 24 | 8.3 | 4.90 | 19 | 103MF |
| UIS1311-153MF | 15 | ±20% | 4.50 | 29 | 7.1 | 4.50 | 15 | 153MF |
| UIS1311-183MF | 18 | ±20% | 4.20 | 30 | 5.8 | 4.20 | 13 | 183MF |
| UIS1311-223MF | 22 | ±20% | 3.50 | 47 | 5.6 | 3.50 | 12 | 223MF |
| UIS1311-333MF | 33 | ±20% | 2.80 | 65 | 4.3 | 2.80 | 9 | 333MF |
| UIS1311-473MF | 47 | ±20% | 2.45 | 85 | 3.8 | 2.45 | 7 | 473MF |
| UIS1311-683MF | 68 | ±20% | 2.00 | 130 | 3.1 | 2.00 | 6 | 683MF |
| UIS1311-104MF | 100 | ±20% | 1.60 | 200 | 2.6 | 1.60 | 4.8 | 104MF |
| UIS1311-154MF | 150 | ±20% | 1.32 | 280 | 2.1 | 1.32 | 3.5 | 154MF |
| UIS1311-224MF | 220 | ±20% | 1.13 | 360 | 1.7 | 1.13 | 2.8 | 224MF |
| UIS1311-334MF | 330 | ±20% | 0.95 | 580 | 1.35 | 0.95 | 2.3 | 334MF |
| UIS1311-474MF | 470 | ±20% | 0.75 | 860 | 1.15 | 0.75 | 1.7 | 474MF |
| UIS1311-684MF | 680 | ±20% | 0.60 | 1200 | 1.05 | 0.60 | 1.5 | 684MF |
| UIS1311-105MF | 1000 | ±20% | 0.49 | 2000 | 0.85 | 0.49 | 1.2 | 105MF |

Notes:

1. Ordering Information: UIS1311- bbbaFc.
UIS1311 = Product Type.
bbb = Inductance value in uH (i.e. 223 = 22uH; 224 = 220uH; 105 = 1000uH).
a = Tolerance of Inductance (M = ±20%).
F = Internal Control Code.
c = Packaging Code (T = Tape & Reel Packaging in 13 inch Reel).
2. Inductance is tested at 100kHz, 0.1Vrms.
3. The rated current listed is the lower of the saturation current at 25°C or the heating current.
4. The saturation current, I_{sat}, is the current at which the inductance of the component drops by 10% typical at ambient temperature of 25°C.
5. The heating current, I_{rms}, is the current required to raise the component temperature by approximately 40°C at ambient temperature of 25°C. The current is determined by mounting the component on a typical application PCB and applying the current to the device for 30 minutes.
6. Self-resonant frequency is for reference only.
7. Operating temperature range: -40°C to +125°C.
8. The part temperature (ambient temperature + temperature rise) should not exceed the upper limit of the operating temperature under worst case operating conditions. Circuit design, component placement, PWB trace size and thickness, airflow and other cooling provisions all affect the part temperature. Part temperature should be verified in the end application.



SCHEMATICS

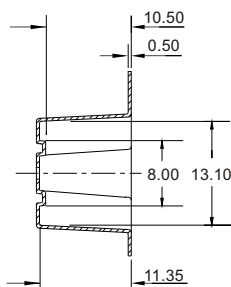
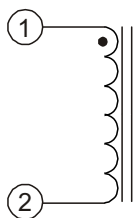


Notes:

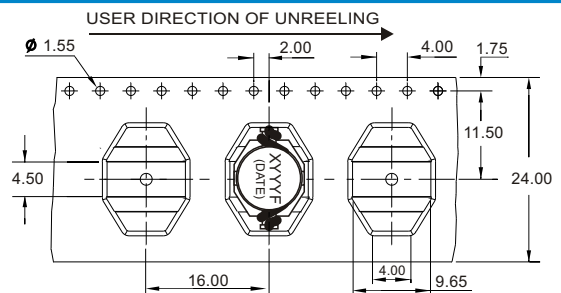
- 9. All dimensions are specified in $\frac{\text{inches}}{\text{mm}}$ with higher precedence in inches.
- 10. Unless otherwise specified, all tolerances are $\pm \frac{.010}{0.25}$

| | |
|------------------|--------------|
| Weight (in gram) | : 2.5 typ. |
| Tape & Reel | : 250 / reel |

SCHEMATIC



PACKAGING



FOR MORE INFORMATION, PLEASE CONTACT

HEADQUARTER

1/F., Harbour View 1, No.12 Science Park East Avenue,
Phase II, Hong Kong Science Park, Shatin, N.T.
Hong Kong

Tel: (852) 2954 3333 Fax: (852) 2954 3304

Email: eempl@eleceltek.com

Website: <http://www.eleceltek.com> / www.eemagnetic.com

Information herein is for reference only and subject to change without notice. It does not constitute any representation, warranty or commitment of the company in respect of the products in any aspect. All logos, brands and product names mentioned herein are trademarks or registered trademarks of their respective owners. The company does not assume any liability arising out of the application or use of any product or circuit described herein. Copyrights 2009, E & E Magnetic Products Limited.