




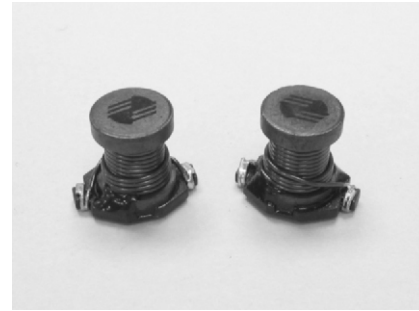


-  Suitable for DC/DC converters, industrial products and handheld devices.
-  Unshielded and small footprint with high energy storage and low resistance
-  Superior performance and self-leaded design for surface mounting applications
-  Inductance range from 10 to 1000 micro H
-  RoHS compliant



**ELECTRICAL SPECIFICATION @ 25°C**

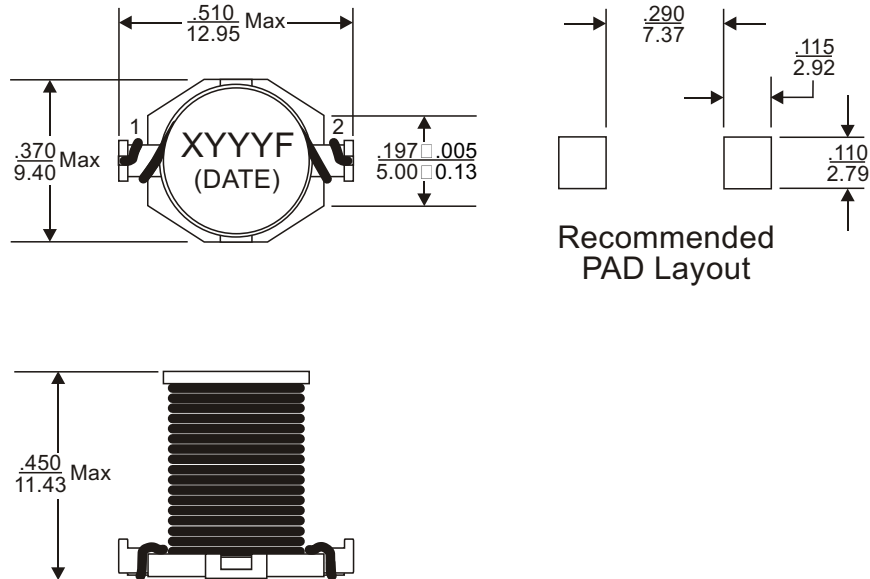
Part Number	Inductance <sup>2</sup> L (uH ± 20%)	DCR (m Max)	SRF (MHz) Typ	Isat <sup>3</sup> (A)	Irms <sup>4</sup> (A)	Marking (YYYY)
UIS3340M-103F	10	40	22	8.0	3.5	M103
UIS3340M-153F	15	50	18	7.0	3.0	M153
UIS3340M-223F	22	66	11	5.5	2.5	M223
UIS3340M-333F	33	80	9	4.0	2.0	M333
UIS3340M-473F	47	110	8	3.8	1.6	M473
UIS3340M-683F	68	170	7	3.0	1.2	M683
UIS3340M-104F	100	220	5	2.5	1.2	M104
UIS3340M-154F	150	340	4	2.0	0.9	M154
UIS3340M-224F	220	440	3.5	1.6	0.7	M224
UIS3340M-334F	330	700	2.5	1.2	0.6	M334
UIS3340M-474F	470	950	2	1.0	0.3	M474
UIS3340M-684F	680	1200	2	1.0	0.2	M684
UIS3340M-105F	1000	2000	1.5	0.8	0.1	M105

**Notes:**

1. Ordering Information: UIS3340a - bbbFc.  
 UIS3340 = Product Type.  
 a = Tolerance of Inductance (M = ±20%).  
 bbb = Inductance value in uH (i.e. 223 =22uH; 224 = 220uH; 105 = 1000uH).  
 F = Internal Control Code.  
 c = Packaging Code (T = Tape & Reel Packaging in 13 inch Reel).
2. Inductance is tested at 100kHz, 0.1Vrms.
3. Inductance drops 10% typical at Isat.
4. T=20°C typical at Iirms.
5. Operating temperature range: -40°C to +125°C.
6. The part temperature (ambient temperature + temperature rise) should not exceed the upper limit of the operating temperature under worst case operating conditions. Circuit design, component placement, PWB trace size and thickness, airflow and other cooling provisions all affect the part temperature. Part temperature should be verified in the end application.



MECHANICAL DIMENSIONS

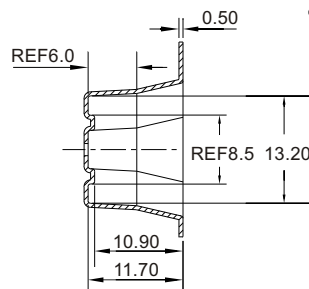
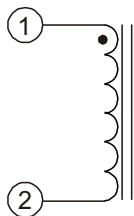


Notes:

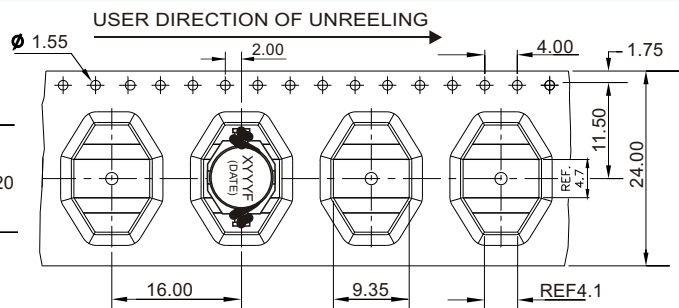
- 7. All dimensions are specified in  $\frac{\text{inches}}{\text{mm}}$  with higher precedence in inches.
- 8. Unless otherwise specified, all tolerances are  $\pm 0.010$  /  $\pm 0.25$ .

Weight (in gram)	: 2.2 typ.
Tape & Reel	: 250 / reel

SCHMATIC



PACKAGING



FOR MORE INFORMATION, PLEASE CONTACT

**HEADQUARTER**  
1/F., Harbour View 1, No.12 Science Park East Avenue,  
Phase II, Hong Kong Science Park, Shatin, N.T.  
Hong Kong  
Tel: (852) 2954 3333 Fax: (852) 2954 3304  
Email: eempl@eleceltek.com  
Website: <http://www.eleceltek.com> / [www.eemagnetic.com](http://www.eemagnetic.com)

Information herein is for reference only and subject to change without notice. It does not constitute any representation, warranty or commitment of the company in respect of the products in any aspect. All logos, brands and product names mentioned herein are trademarks or registered trademarks of their respective owners. The company does not assume any liability arising out of the application or use of any product or circuit described herein. Copyrights 2009, E & E Magnetic Products Limited.